

Screw connection HAN 16E-BU-S - Socket insert for connector 16p 09 33 016 2701

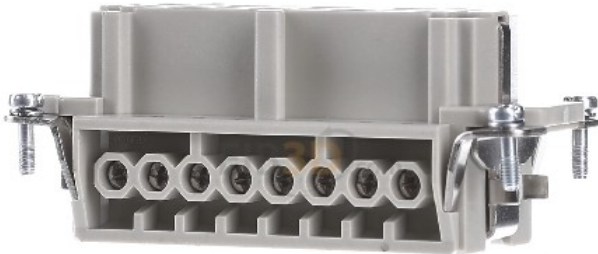


Harting
09 33 016 2701
5713140051454 EAN/GTIN

82,68 CNY excl. VAT**
plus shipping



4-5 days* (CHN)



Screw connection HAN 16E-BU-S 09 33 016 2701 Number of power contacts 16, contact design socket, number of poles 16, material of the connector insert thermoplastic, rated current In 16A, operating temperature -40 ... 125°C, rated voltage 500V, rated impulse voltage 6kV, degree of pollution 3, Design of the electrical connection screw connection, with wire protection, connectable conductor cross-section finely stranded without ferrule 0.75 ... 2.5mm², connectable conductor cross-section stranded 0.75 ... 2.5mm², material of the contact coating silver, material of the contact insert other, material of the contact other copper alloys, flammability class of the insulating material according to UL 94 V0, with protective conductor, min. number of mating cycles 500, inserts, screw connection, socket, polycarbonate, RAL 7032 (pebble grey), rated current: 16 A, size: 16 B, contacts: 16, conductor cross-section : 0.75...2.5 mm², copper alloy, silver-plated

YOUR ADVANTAGES



WORLDWIDE TRADE
Corporate video eibmarkt®



99% CUSTOMER SATISFACTION
> 500,000 customers worldwide



DHL TRACK & TRACE
Shipment tracking



COMPLAINTS HANDLING
Obliging and 100% safely



25 YEARS OF EXPERIENCE
In worldwide mail order



ORDER LIVE CHAT
With order history



SHORT DELIVERY TIME
Warehousing



REFUND
Within 14 days



DATA PROTECTION
Guarantee

© 1997-2024 eibmarkt.com GmbH - Kemmlerstrasse 1 - 08527 Plauen - Germany

eibabo® and **eibmarkt®** are registered trademarks of EIBMARKT® GmbH holding company (www.eibmarkt.de). eibabo® is a company of eibmarkt.com GmbH. eibmarkt.com GmbH is a 100% subsidiary of EIBMARKT® GmbH holding.

* Note on delivery time: Day = Monday to Friday, no public holiday in Bavaria or Saxony. Goods are also delivered on Saturdays (DHL).

** Payment methods may vary from country to country. All prices plus shipping and excluding customs duties or other additional costs (import sales tax) for deliveries outside the EU.

*** Savings compared to RRP = the manufacturer's recommended retail price. RRP is the price recommended to retailers by the manufacturer, importer or wholesaler as a resale price to the customer. The RRP is also referred to as the list price and is defined as the highest possible price that a buyer would pay for a specific product before any discounts (Source of gross list prices: Germany).

eibabo® the Smart Home technology shop
eibabo® electronics cheap online order
eibabo® electric appliances buy online

