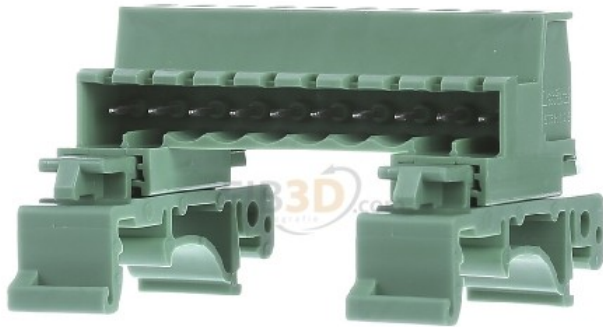


**Plug-in block - Terminal strip 10-p 0,2...2,5mm<sup>2</sup>  
UMSTBHK 2,5/10-G**



**Phoenix**  
UMSTBHK 2,5/10-G  
1765768  
4017918031794 EAN/GTIN

**56,37 CNY** excl. VAT\*\*  
plus shipping



4-5 days\* (CHN)

Plug-in block UMSTBHK 2.5/10-G Connectable conductor cross-section, finely stranded without ferrule 0.2 ... 2.5mm<sup>2</sup>, Connectable conductor cross-section, finely stranded with ferrule 0.25 ... 1.5mm<sup>2</sup>, Connectable conductor cross-section, solid 0.2 ... 2, 5mm<sup>2</sup>, connectable conductor cross-section stranded 0.2 ... 1.5mm<sup>2</sup>, rated current In 12A, rated voltage 250V, number of poles 10, material of the insulating body other, flammability class of the insulating material according to UL 94 V0, width/grid dimension 5mm, height with lowest mounting type 33mm, length 52.3mm, end plate required, color green, DIN rail connector, rated current: 12 A, rated voltage (III/2): 320 V, number of positions: 10, pitch: 5 mm, connection type: screw connection with tension sleeve, color: green, contact surface: tin, Mounting: mounting rail

**YOUR ADVANTAGES**



**WORLDWIDE TRADE**  
Corporate video eibmarkt®



**99% CUSTOMER SATISFACTION**  
> 500,000 customers worldwide



**DHL TRACK & TRACE**  
Shipment tracking



**COMPLAINTS HANDLING**  
Obliging and 100% safely



**25 YEARS OF EXPERIENCE**  
In worldwide mail order



**ORDER LIVE CHAT**  
With order history



**SHORT DELIVERY TIME**  
Warehousing



**REFUND**  
Within 14 days



**DATA PROTECTION**  
Guarantee

© 1997-2024 eibmarkt.com GmbH - Kemmlerstrasse 1 - 08527 Plauen - Germany

eibabo® and eibmarkt® are registered trademarks of EIBMARKT® GmbH holding company ([www.eibmarkt.de](http://www.eibmarkt.de)). eibabo® is a company of eibmarkt.com GmbH. eibmarkt.com GmbH is a 100% subsidiary of EIBMARKT® GmbH holding.

\* Note on delivery time: Day = Monday to Friday, no public holiday in Bavaria or Saxony. Goods are also delivered on Saturdays (DHL).

\*\* Payment methods may vary from country to country. All prices plus shipping and excluding customs duties or other additional costs (import sales tax) for deliveries outside the EU.

\*\*\* Savings compared to RRP = the manufacturer's recommended retail price. RRP is the price recommended to retailers by the manufacturer, importer or wholesaler as a resale price to the customer. The RRP is also referred to as the list price and is defined as the highest possible price that a buyer would pay for a specific product before any discounts (Source of gross list prices: Germany).

eibabo® the Smart Home technology shop  
eibabo® electronics cheap online order  
eibabo® electric appliances buy online

