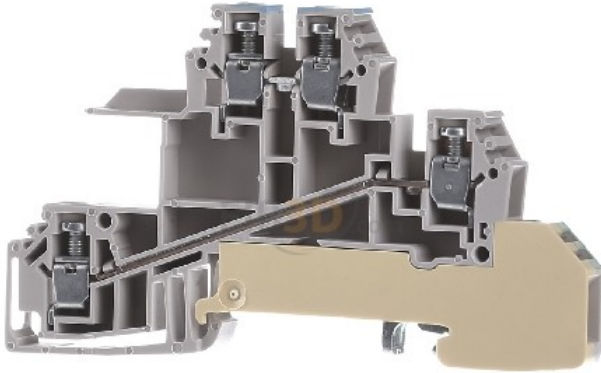


Distribution terminal 84.5x6.1x49mm - Feed-through terminal block 6,1mm 24A WDL 2.5/S/N/L/PE



Weidmüller
WDL 2.5/S/N/L/PE
1030700000
4008190184452 EAN/GTIN

21,81 CNY excl. VAT**
plus shipping



4-5 days* (CHN)

Installation terminal block 6mm 24A 3-p Connectable conductor cross section fine-strand without cable end sleeve 0,5 ... 4mm², Connectable conductor cross section fine-strand with cable end sleeve 0,25 ... 2,5mm², Connectable conductor cross section solid-core 0,5 ... 4mm², Rated current In 24A, Rated voltage 400V, Type of electrical connection 1 Screw connection, Type of electrical connection 2 Screw connection, Connection position Sideways, Number of potentials 3, Mounting method DIN rail (top hat rail) 35 mm, Material insulation body Thermoplastic, Operation temperature 0 ... 120°C, Flammability class of insulation material acc. with UL94 V0, Width/grid dimension 6mm, Height at lowest possible mounting height 48,7mm, Length 84,5mm, Closing plate required, Basic colour Beige, ProtectiveEarth-function (PE), N function possible

YOUR ADVANTAGES



WORLDWIDE TRADE
Corporate video eibmarkt®



99% CUSTOMER SATISFACTION
> 500,000 customers worldwide



DHL TRACK & TRACE
Shipment tracking



COMPLAINTS HANDLING
Obliging and 100% safely



25 YEARS OF EXPERIENCE
In worldwide mail order



ORDER LIVE CHAT
With order history



SHORT DELIVERY TIME
Warehousing



REFUND
Within 14 days



DATA PROTECTION
Guarantee

© 1997-2024 eibmarkt.com GmbH - Kemmlerstrasse 1 - 08527 Plauen - Germany

eibabo® and **eibmarkt®** are registered trademarks of EIBMARKT® GmbH holding company (www.eibmarkt.de). eibabo® is a company of eibmarkt.com GmbH. eibmarkt.com GmbH is a 100% subsidiary of EIBMARKT® GmbH holding.

* Note on delivery time: Day = Monday to Friday, no public holiday in Bavaria or Saxony. Goods are also delivered on Saturdays (DHL).

** Payment methods may vary from country to country. All prices plus shipping and excluding customs duties or other additional costs (import sales tax) for deliveries outside the EU.

*** Savings compared to RRP = the manufacturer's recommended retail price. RRP is the price recommended to retailers by the manufacturer, importer or wholesaler as a resale price to the customer. The RRP is also referred to as the list price and is defined as the highest possible price that a buyer would pay for a specific product before any discounts (Source of gross list prices: Germany).

eibabo® the Smart Home technology shop
eibabo® electronics cheap online order
eibabo® electric appliances buy online

