

Feed-through terminal 4-wire, TS 35 2002-1401



WAGO

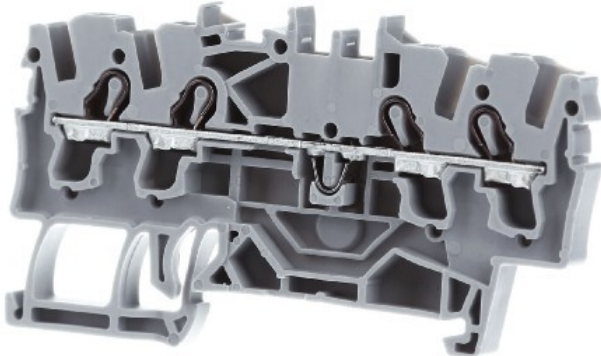
2002-1401

4017332999281 EAN/GTIN

7,35 CNY excl. VAT**
plus shipping



4-5 days* (CHN)



Feed-through terminal block 5,2mm 24A Connectable conductor cross section fine-strand without cable end sleeve 0,25 ... 4mm², Connectable conductor cross section fine-strand with cable end sleeve 0,75 ... 2,5mm², Connectable conductor cross section solid-core 0,75 ... 4mm², Connectable conductor cross section multi-wired 0,25 ... 2,5mm², Rated current In 24A, Rated voltage 800V, Type of electrical connection 1 Spring clamp connection, Type of electrical connection 2 Spring clamp connection, Connection position Above, Number of levels 1, Number of clamp positions per level 4, Mounting method DIN rail (top hat rail) 35 mm, Material insulation body Thermoplastic, Operation temperature 105 ... 105°C, Inflammability class of insulation material acc. with UL94 V0, Width/grid dimension 5,2mm, Height at lowest possible mounting height 32,9mm, Length 70mm, Explosion-tested version 'Ex e', Closing plate required, Colour Grey, Internally connected stages

YOUR ADVANTAGES



WORLDWIDE TRADE

Corporate video eibmarkt[®]



COMPLAINTS HANDLING

Obliging and 100% safely



SHORT DELIVERY TIME

Warehousing



99% CUSTOMER SATISFACTION

> 500,000 customers worldwide



25 YEARS OF EXPERIENCE

In worldwide mail order



REFUND

Within 14 days



DHL TRACK & TRACE

Shipment tracking



ORDER LIVE CHAT

With order history



DATA PROTECTION

Guarantee

© 1997-2024 eibmarkt.com GmbH - Kemmlerstrasse 1 - 08527 Plauen - Germany

eibabo[®] and **eibmarkt[®]** are registered trademarks of EIBMARKT[®] GmbH holding company (www.eibmarkt.de). eibabo[®] is a company of eibmarkt.com GmbH. eibmarkt.com GmbH is a 100% subsidiary of EIBMARKT[®] GmbH holding.

* Note on delivery time: Day = Monday to Friday, no public holiday in Bavaria or Saxony. Goods are also delivered on Saturdays (DHL).

** Payment methods may vary from country to country. All prices plus shipping and excluding customs duties or other additional costs (import sales tax) for deliveries outside the EU.

*** Savings compared to RRP = the manufacturer's recommended retail price. RRP is the price recommended to retailers by the manufacturer, importer or wholesaler as a resale price to the customer. The RRP is also referred to as the list price and is defined as the highest possible price that a buyer would pay for a specific product before any discounts (Source of gross list prices: Germany).

eibabo[®] the Smart Home technology shop
eibabo[®] electronics cheap online order
eibabo[®] electric appliances buy online

