

**Patch cable 62.5/125 OM1, 2m 1xLC-D, 1xSC-D, bg - SC duplex Fibre optic patch cord 2m L00891C0019**

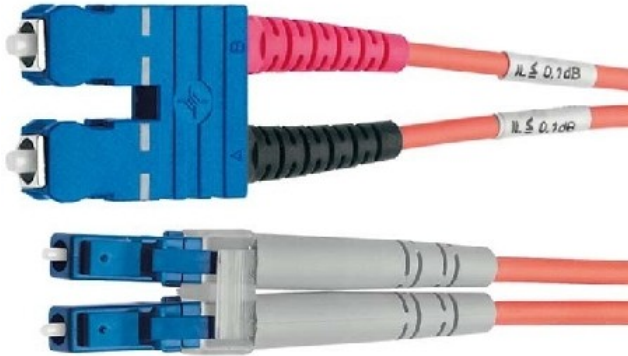


**Telegartner**  
L00891C0019  
4018359357757 EAN/GTIN

**102,83 CNY** excl. VAT\*\*  
plus shipping



15-16 days\* (CHN)



Duplex cable LC/SC 62.5 OM1 2m L00891C0019, fiber type=multimode 62.5/125, category=OM1, number of fibers=2, cable type=duplex, length=2 m, connector type connection 1=SC-Duplex, connector type connection 2 =LC duplex, APC version=no, jacket color=orange, anti-kink sleeve=attached, flame-retardant=according to EN 50265-2-1, versions in single mode and multimode, in standard lengths 1 m, 2 m, 3 m, 5 m and 10 m, customer-specific lengths available in the TICNET configurator at application: patch cable, fiber type: G62.5/125 OM1, housing color: beige, cable color: orange, connector design: 1st side SC duplex , 2nd side LC duplex, length: 2 m, cable dimensions mm: 2.8 x 5.7

**YOUR ADVANTAGES**



**WORLDWIDE TRADE**  
Corporate video eibmarkt®



**99% CUSTOMER SATISFACTION**  
> 500,000 customers worldwide



**DHL TRACK & TRACE**  
Shipment tracking



**COMPLAINTS HANDLING**  
Obliging and 100% safely



**25 YEARS OF EXPERIENCE**  
In worldwide mail order



**ORDER LIVE CHAT**  
With order history



**SHORT DELIVERY TIME**  
Warehousing



**REFUND**  
Within 14 days



**DATA PROTECTION**  
Guarantee

© 1997-2024 eibmarkt.com GmbH - Kemmlerstrasse 1 - 08527 Plauen - Germany

**eibabo®** and **eibmarkt®** are registered trademarks of EIBMARKT® GmbH holding company ([www.eibmarkt.de](http://www.eibmarkt.de)). eibabo® is a company of eibmarkt.com GmbH. eibmarkt.com GmbH is a 100% subsidiary of EIBMARKT® GmbH holding.

\* Note on delivery time: Day = Monday to Friday, no public holiday in Bavaria or Saxony. Goods are also delivered on Saturdays (DHL).

\*\* Payment methods may vary from country to country. All prices plus shipping and excluding customs duties or other additional costs (import sales tax) for deliveries outside the EU.

\*\*\* Savings compared to RRP = the manufacturer's recommended retail price. RRP is the price recommended to retailers by the manufacturer, importer or wholesaler as a resale price to the customer. The RRP is also referred to as the list price and is defined as the highest possible price that a buyer would pay for a specific product before any discounts (Source of gross list prices: Germany).

**eibabo®** the Smart Home technology shop  
**eibabo®** electronics cheap online order  
**eibabo®** electric appliances buy online

