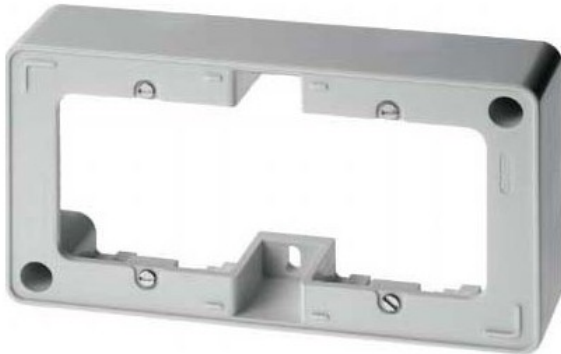


Double frame, polar white/glossy surface mounting, with cable insert. 10300069



Berker
10300069
4011334175872 EAN/GTIN

85,52 CNY excl. VAT**
plus shipping



4-5 days* (CHN)

Frame 2f.pws/gl AP, w.line insert. 10300069 Composition of surface-mounted frame, number of modules (with modular construction) 0, number of units 2, horizontal and vertical mounting direction, plastic material, duroplast material quality, halogen-free, surface untreated, surface finish glossy, color white, RAL number (similar) 9010, with duct entry, with cable entry, degree of protection (IP) IP20, device width 155mm, device height 85mm, device depth 35mm, surface-mounted frame 2x surface-mounted, accessories polar white, glossy. Double surface-mounted frame for vertical and horizontal installation, with cable and duct entry, entry at the top, bottom and 2x per side possible, surface/design range. With the surface-mounted housing, flush-mounted devices can be used for surface-mounted installation. Material: plastic, thermoset, halogen-free.

YOUR ADVANTAGES



WORLDWIDE TRADE
Corporate video eibmarkt[®]



COMPLAINTS HANDLING
Obliging and 100% safely



SHORT DELIVERY TIME
Warehousing



99% CUSTOMER SATISFACTION
> 500,000 customers worldwide



25 YEARS OF EXPERIENCE
In worldwide mail order



REFUND
Within 14 days



DHL TRACK & TRACE
Shipment tracking



ORDER LIVE CHAT
With order history



DATA PROTECTION
Guarantee

© 1997-2024 eibmarkt.com GmbH - Kemmlerstrasse 1 - 08527 Plauen - Germany

eibabo[®] and eibmarkt[®] are registered trademarks of EIBMARKT[®] GmbH holding company (www.eibmarkt.de). eibabo[®] is a company of eibmarkt.com GmbH. eibmarkt.com GmbH is a 100% subsidiary of EIBMARKT[®] GmbH holding.

* Note on delivery time: Day = Monday to Friday, no public holiday in Bavaria or Saxony. Goods are also delivered on Saturdays (DHL).

** Payment methods may vary from country to country. All prices plus shipping and excluding customs duties or other additional costs (import sales tax) for deliveries outside the EU.

*** Savings compared to RRP = the manufacturer's recommended retail price. RRP is the price recommended to retailers by the manufacturer, importer or wholesaler as a resale price to the customer. The RRP is also referred to as the list price and is defined as the highest possible price that a buyer would pay for a specific product before any discounts (Source of gross list prices: Germany).

eibabo[®] the Smart Home technology shop
eibabo[®] electronics cheap online order
eibabo[®] electric appliances buy online

